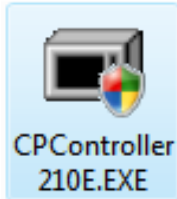


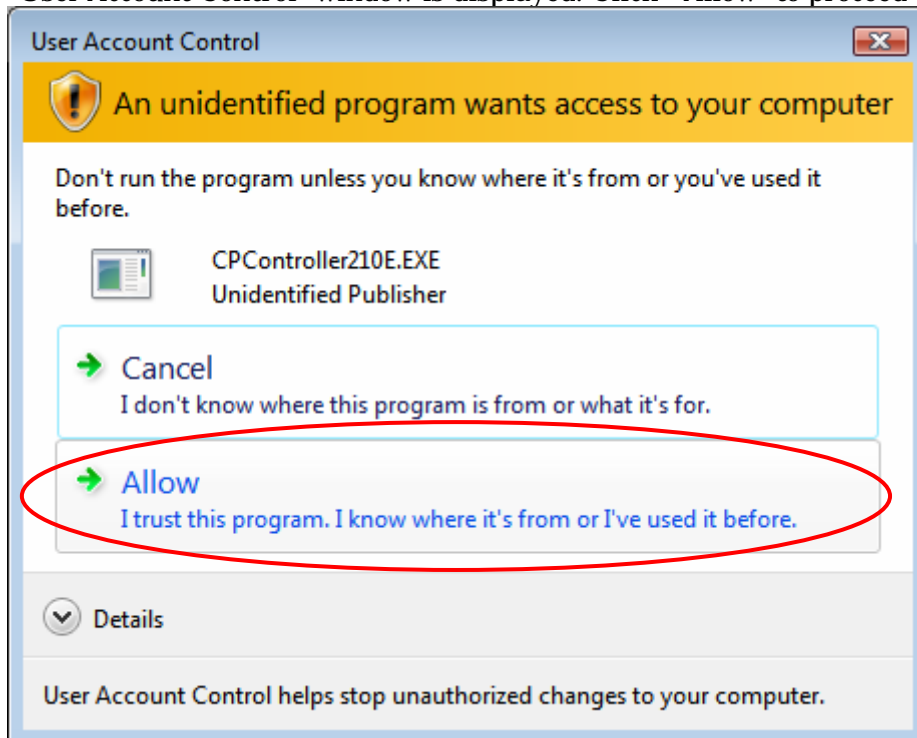
Installation instruction for Windows Vista

1. Download the file “CPController210E.EXE” to any folder in your PC.
Note: If older version of the Cutting Plotter controller is already installed on your PC, uninstall it first.

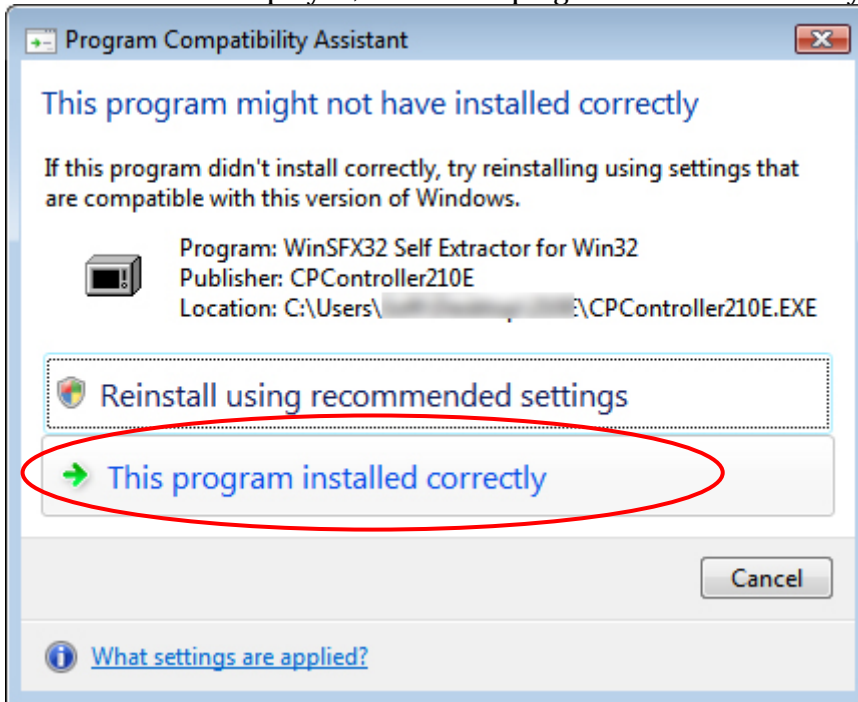
2. Double click the downloaded file “CPController210E.EXE”.



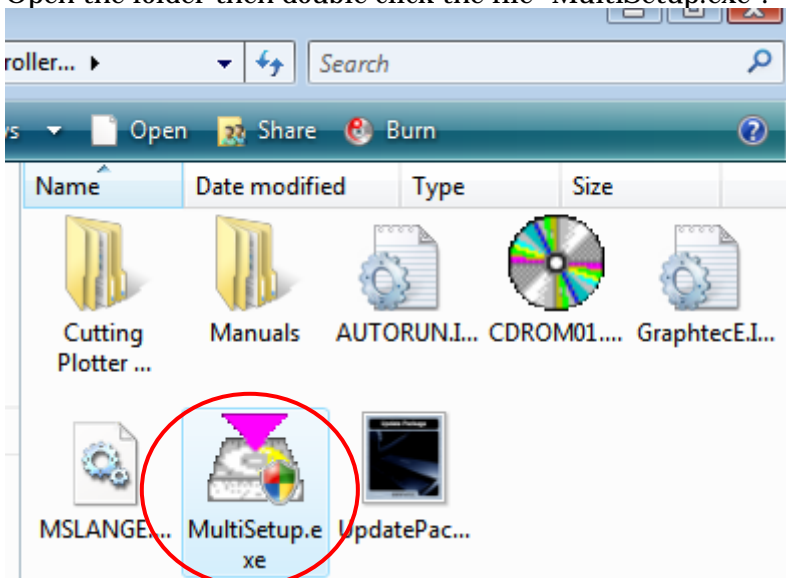
3. “User Account Control” window is displayed. Click “Allow” to proceed the installation.



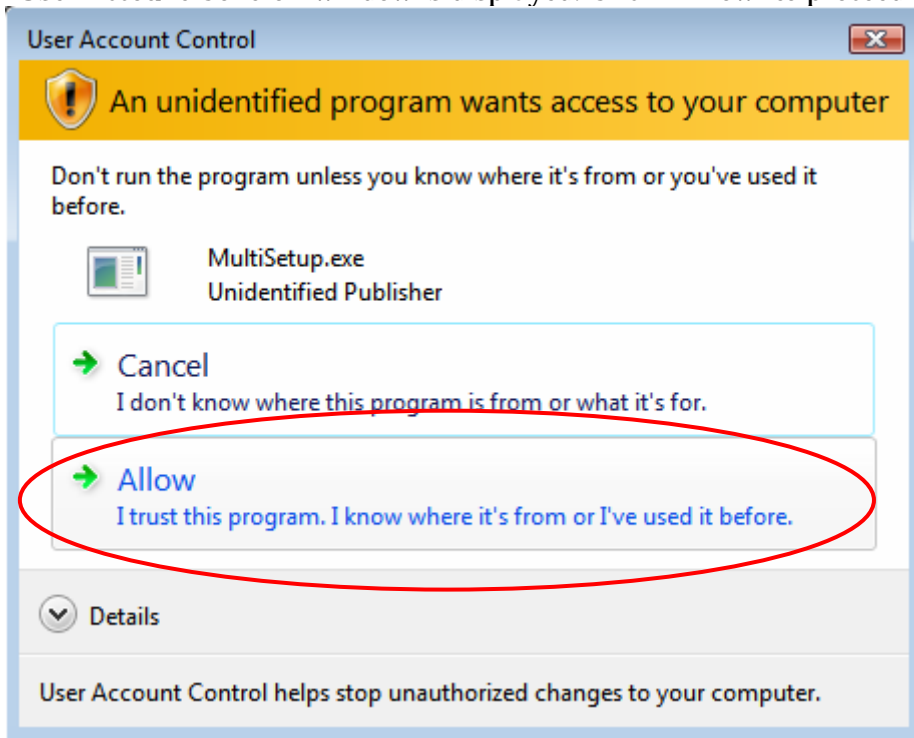
- Following window “Program Compatibility Assistant” may be displayed.
If this window is displayed, click “This program installed correctly” to close this window.



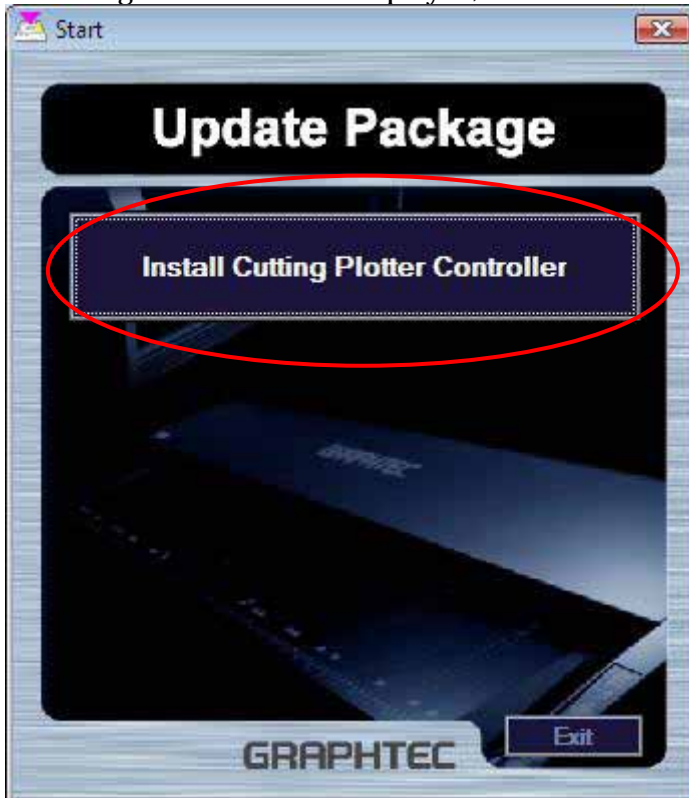
- A new folder “CPCController210E” is created in the folder that “CPCController210E.EXE” was downloaded.
- Open the folder then double click the file “MultiSetup.exe”.



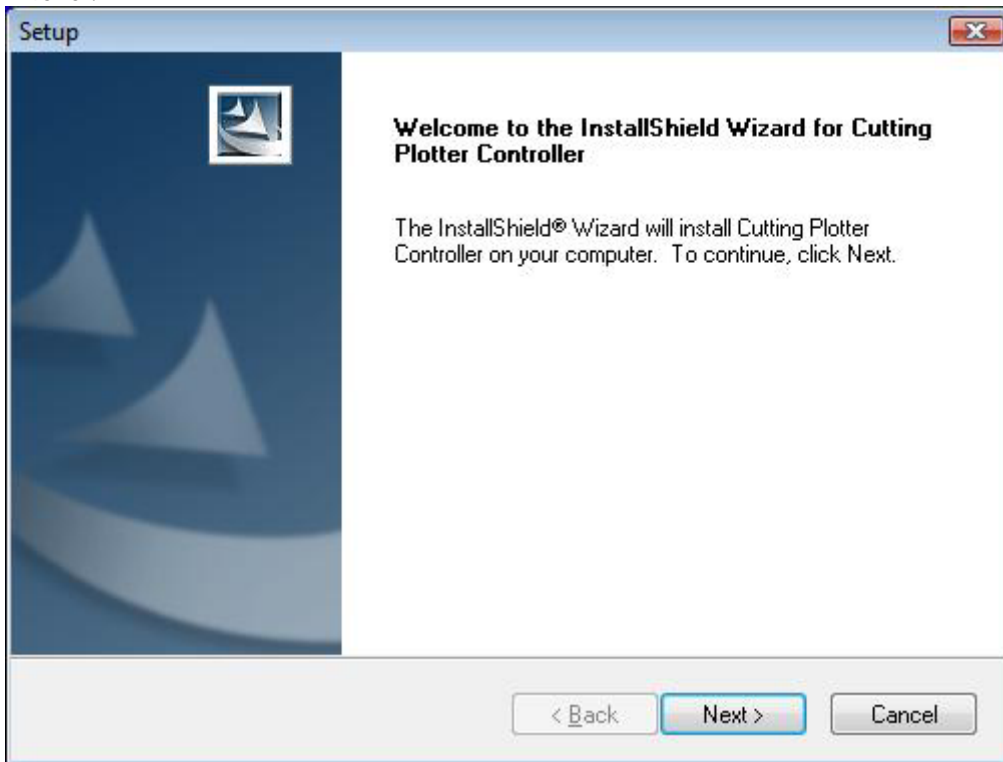
7. "User Account Control" window is displayed. Click "Allow" to proceed the installation.



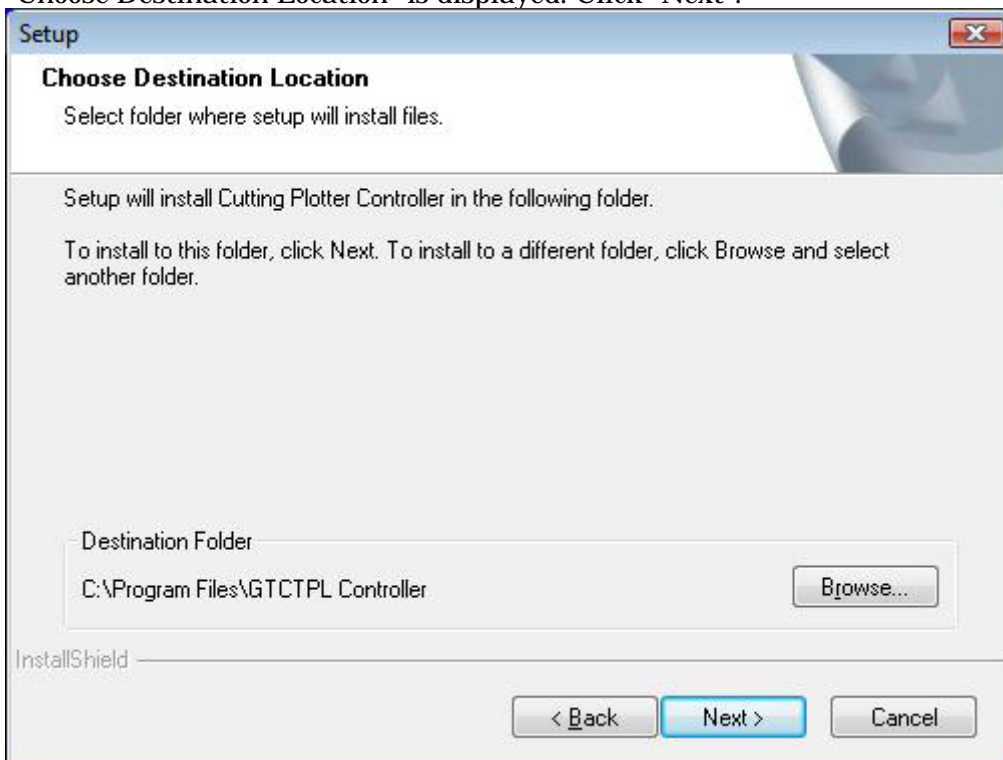
8. Following start window is displayed, then click "Install Cutting Plotter Controller".



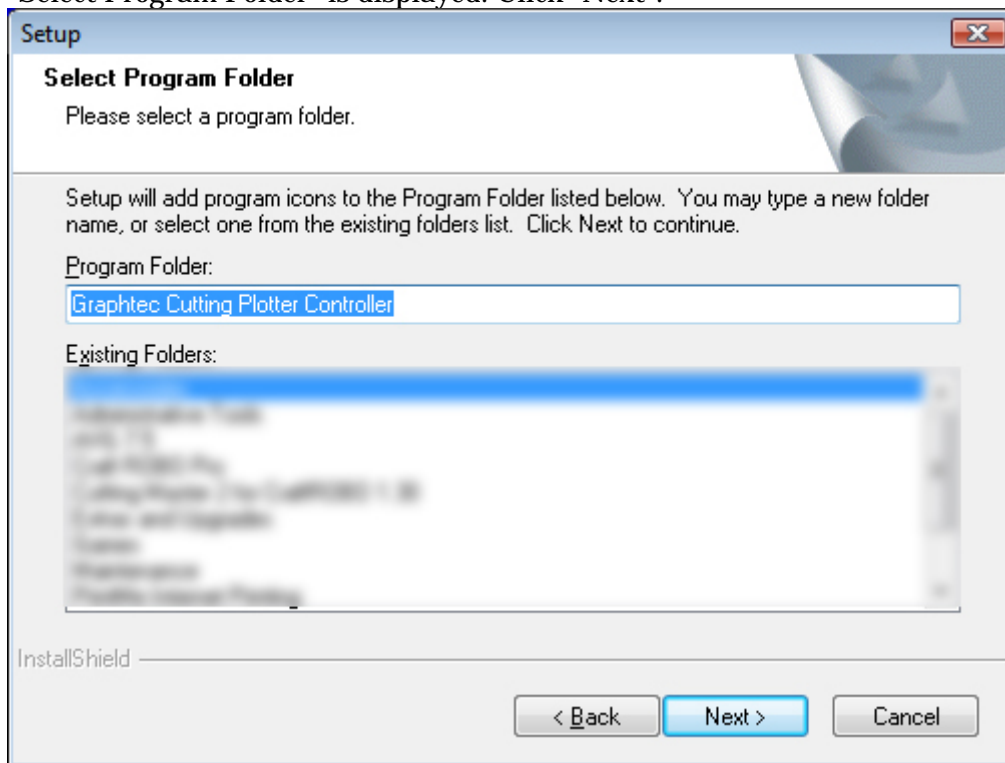
9. "Welcome to the Install Shield Wizard for Cutting Plotter Controller" is displayed. Click "Next".



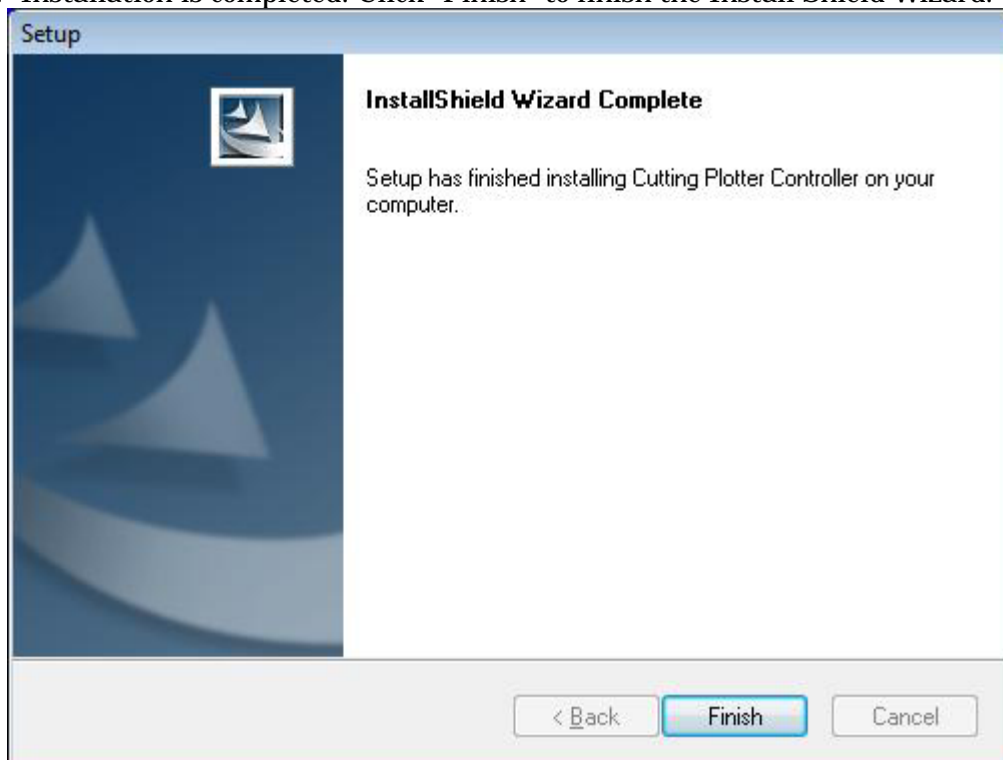
10. "Choose Destination Location" is displayed. Click "Next".



11. "Select Program Folder" is displayed. Click "Next".



12. Installation is completed. Click "Finish" to finish the Install Shield Wizard.



13. Click "Exit" in the Start window to close the window.

