

Installation instruction for Windows 2000

1. Download the file "CPController210E.EXE" to any folder in your PC.
Note: If older version of the Cutting Plotter controller is already installed on your PC, uninstall it first.

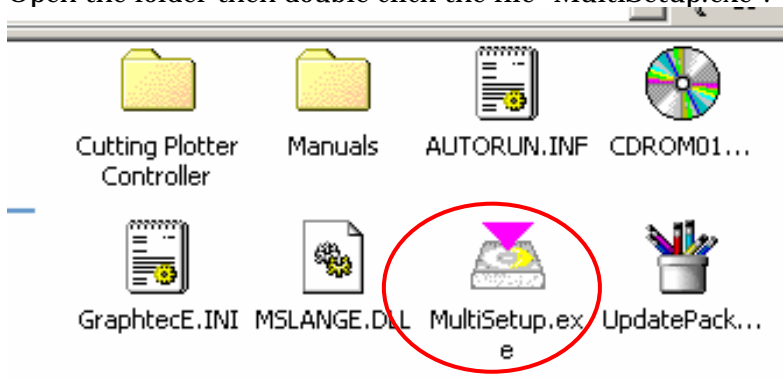
2. Double click the downloaded file "CPCtrl-UPDL01E.EXE".



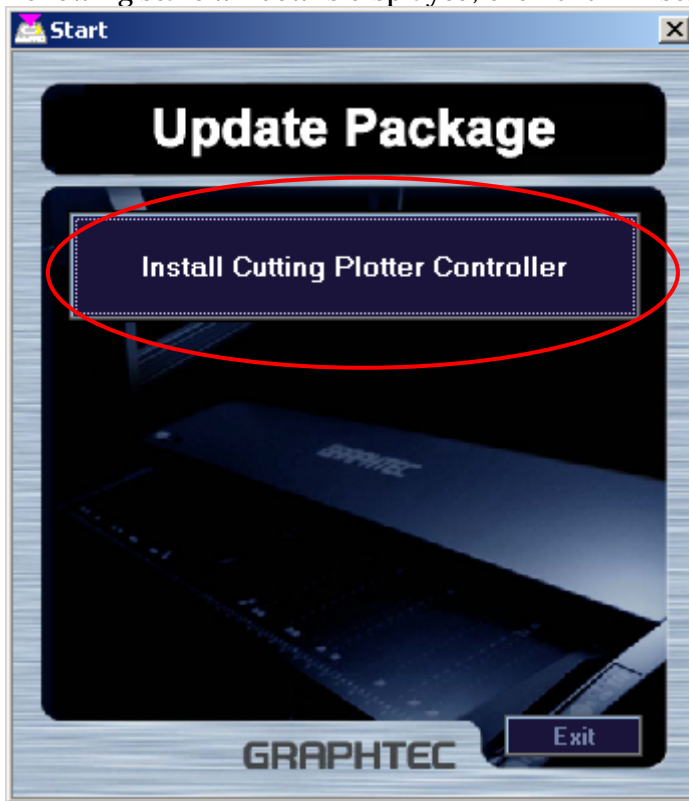
CPController2
10E.EXE

3. A new folder "CPController210E" is created in the folder that "CPController210E.EXE" was downloaded.

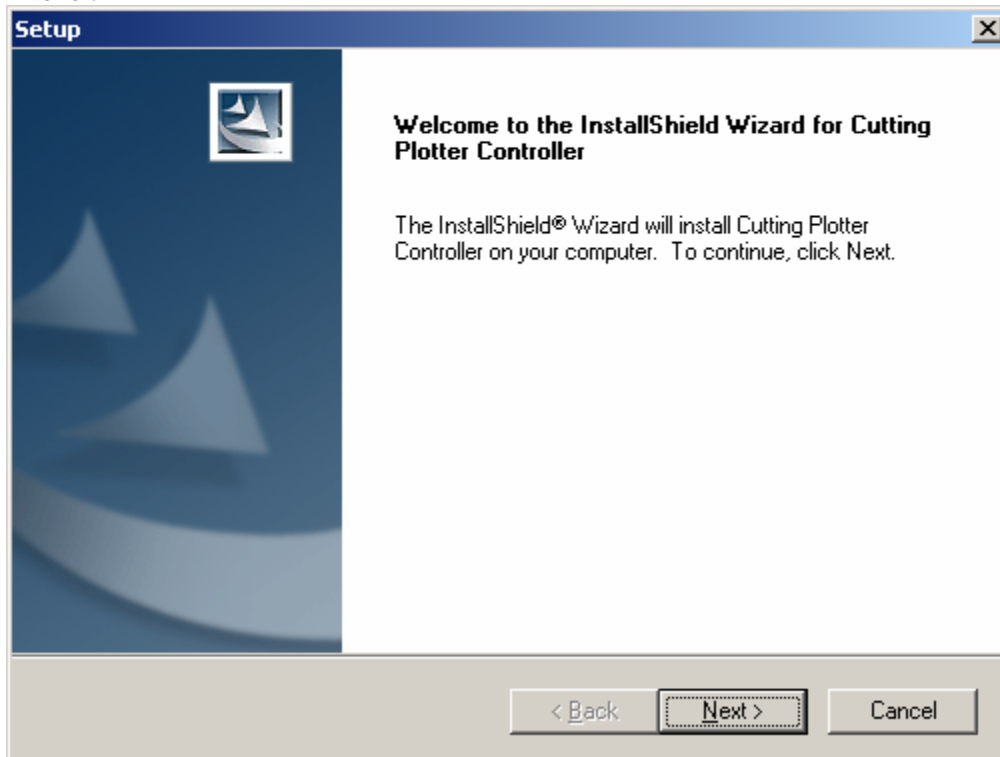
4. Open the folder then double click the file "MultiSetup.exe".



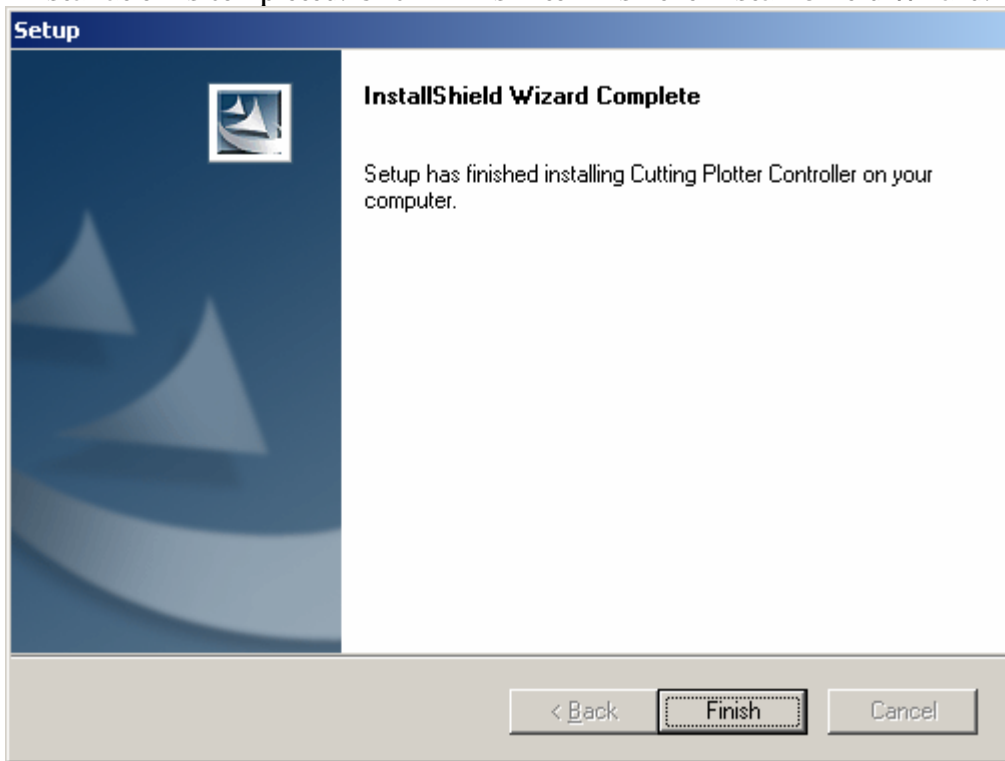
5. Following start window is displayed, then click “Install Cutting Plotter Controller”.



6. “Welcome to the Install Shield Wizard for Cutting Plotter Controller” is displayed. Click “Next”.



9. Installation is completed. Click “Finish” to finish the Install Shield Wizard.



10. Click “Exit” in the Start window to close the window.

