

Menu 2 To Cut a Vinyl Sticker

How do I use it?
What is a vinyl sticker?

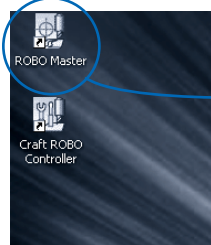


A vinyl sticker is a self-adhesive, single-color sheet of film. Logos and text can be cut out of the sheet for use on car windows or as store signs, for example. Here you can enjoy cutting out your own name or creating your own original logo, and then affixing it to a favorite item.



1 Launch ROBO Master

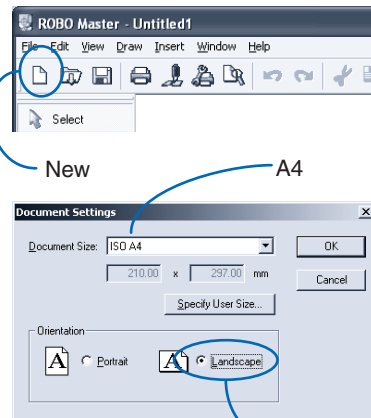
1 Launch ROBO Master



ROBO Master shortcut icon


Click the desktop icon to launch [ROBO Master].

2 Set the Document Size

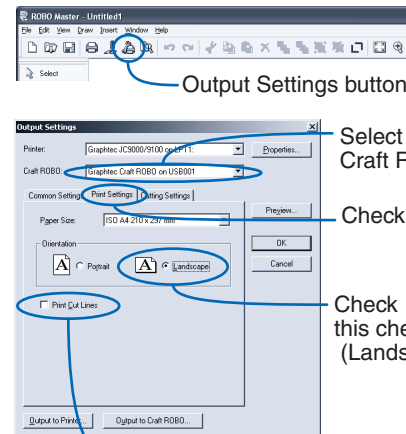


New A4

Landscape

Click the New button  to display the Document Settings window. Select "ISO A4" for Document Size and "Landscape" for Orientation, and then click the [OK] button.

3 Make the Print Settings




Output Settings button

Select Craft ROBO

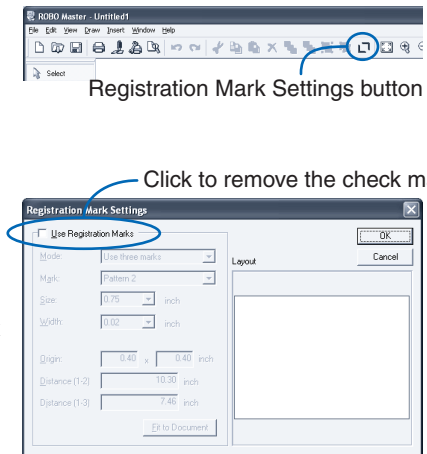
Check

Check this checkbox (Landscape)

Click to remove the check mark


Click the Output Settings button  to display the Output Settings window. Make sure that Graphtec Craft ROBO has been specified in the Craft ROBO box. Click "Print Settings" and uncheck the "Print Cut Lines" checkbox. Click the [OK] button to return to the Create Drawing window.

4 Change the Registration Mark Settings



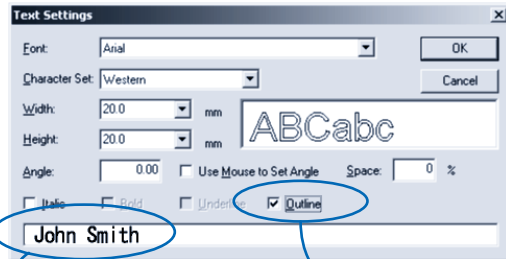
Registration Mark Settings button

Click to remove the check mark

Click the Registration Mark Settings button  to display the Registration Mark Settings screen. Click "Use Registration Marks" to uncheck the "Use Registration Marks" checkbox. Click the [OK] button to return to the Create Drawing window.

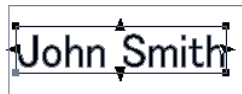
2 Design a Character String or an Object

1 Enter a character string



Enter a character string

Insert a check in the Outline checkbox



Place the character string

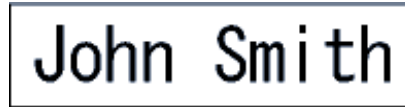
Click the Text tool button **T** to display the Text Settings window. Insert a check in the "Outline" checkbox, set the font and text size, and then enter a name in the character string entry box. Click the [OK] button to return to the Create Drawing window, and left-click at the position where you wish the name to be placed,







HINT

We recommend that you use a font such as a Gothic alphabet font and that you make your characters 20 mm or larger. This will make it easier to weed around the characters (remove unwanted vinyl) after cutting.

2 Add a frame



Enclose the characters with a frame by using one of these drawing tools [] [] [] [].



HINT

Adding a frame around the characters makes it easier to weed them after cutting, and also makes it easier to transfer the characters using an application sheet.








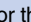
HINT

If you wish to cut the characters with a frame around them, you will need to create three rectangles. The white areas in the figure below represent the areas that have been weeded (unnecessary vinyl removed). Adding an exterior frame around the characters makes it easier to weed them after cutting, and also makes it easier to transfer the characters using an application sheet.



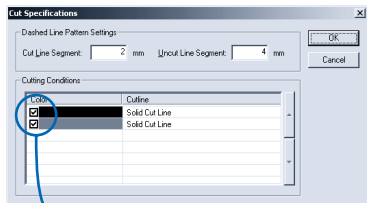
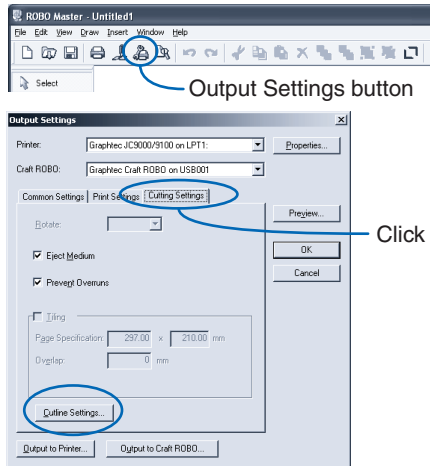
HINT


To draw a shape using the Rectangle , Rounded Rectangle , Circle , or Ellipse  tool, left-click at the top left and then the bottom right of the location where you wish to place the shape.

To draw a square, use the Rectangle  or the Rounded Rectangle  with the Shift key held down.

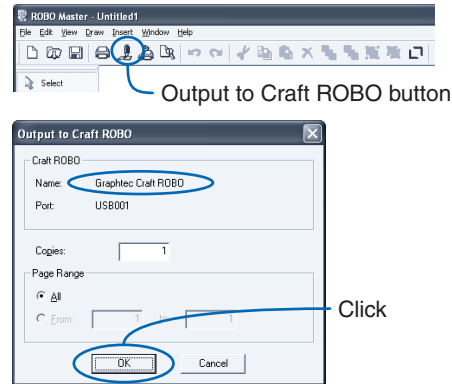
3 Make preparations for cutting


1 Specify the cut line



Click the Output Settings button  to display the Output Settings window. Click "Cutting Settings", and then click the [Cutline Settings] button to display the [Cut Specifications] window. Make sure that the Color checkbox for the Outline is checked. Click the [OK] button, and then click the [OK] button in the Output Settings window.

2 Specify the cutting conditions



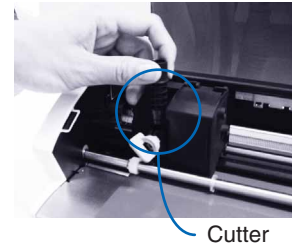
Click the Output to Craft ROBO button , confirm that the driver name reads Graphtec Craft ROBO, and then click the [OK] button to start the Craft ROBO Controller.



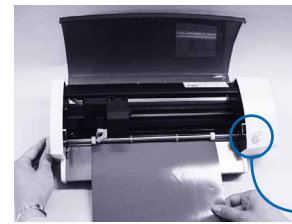
Select "Vinyl Sticker" in the Media Type box.

Click the [Next] button to proceed to the "Blade cap adjustment" step. Attach the blue cap displayed on the screen to the cutter plunger tip.

3 Load the vinyl sticker in your Craft ROBO and mount the cutter



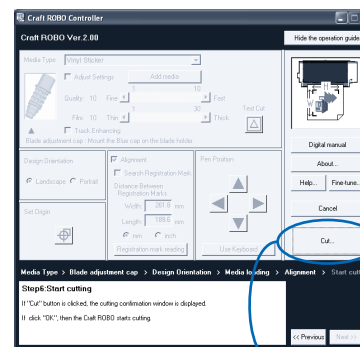
Make sure that the blade adjustment cap is [blue], and then mount the cutter in the Craft ROBO. (For details on how to replace the cap, please refer to the Quick Start Instruction Sheet). Click the [Next] button to proceed to the "Design Orientation" step. Click the [Next] button again to proceed to the "Media loading" step.



Press the standby switch on your Craft ROBO and confirm that the LED lamp is lit. Align the vinyl sticker with the guide line, and then turn the feed knob to feed it so that it is aligned with the top edge of the black cutting mat. (For details on how to load media, please refer to the Quick Start Instruction Sheet).



Close the top cover. Click the [Next] button to proceed to the "Alignment" step. Click the [Next] button again to proceed to the "Start cutting" step.



Click the [Start Cutting] button.

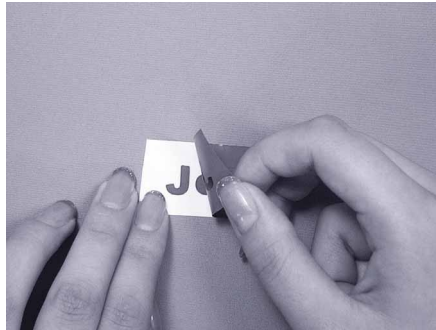
4 Perform Cutting and Affix the Name

1 Perform cutting



Click the [OK] button to start cutting. Do not touch the Craft ROBO during the cutting operation. When cutting has been completed, remove the vinyl sticker. Turn the feed knob to remove it.

2 Weed the name and affix the application sheet



Use tweezers or a similar tool with a fine point to weed the name (remove the unwanted areas).

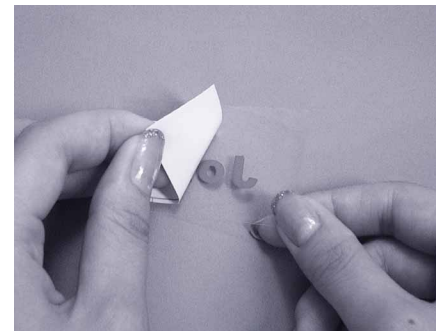


Affix the application sheet on top of the design.

3 Transfer the characters to the application sheet



After affixing the application sheet, rub it firmly with a cloth or something similar to transfer the cut characters onto the sheet.



Peel off the protective liner carefully so that the cut characters remain affixed to the application sheet.

4 Affix the name to the desired item



Place the application sheet with the transferred characters on the surface where you want to affix the name. Rub it firmly with a cloth or similar to make sure that the cut characters are affixed to the surface.



Carefully peel off the application sheet to complete the process.