

Read Me First!

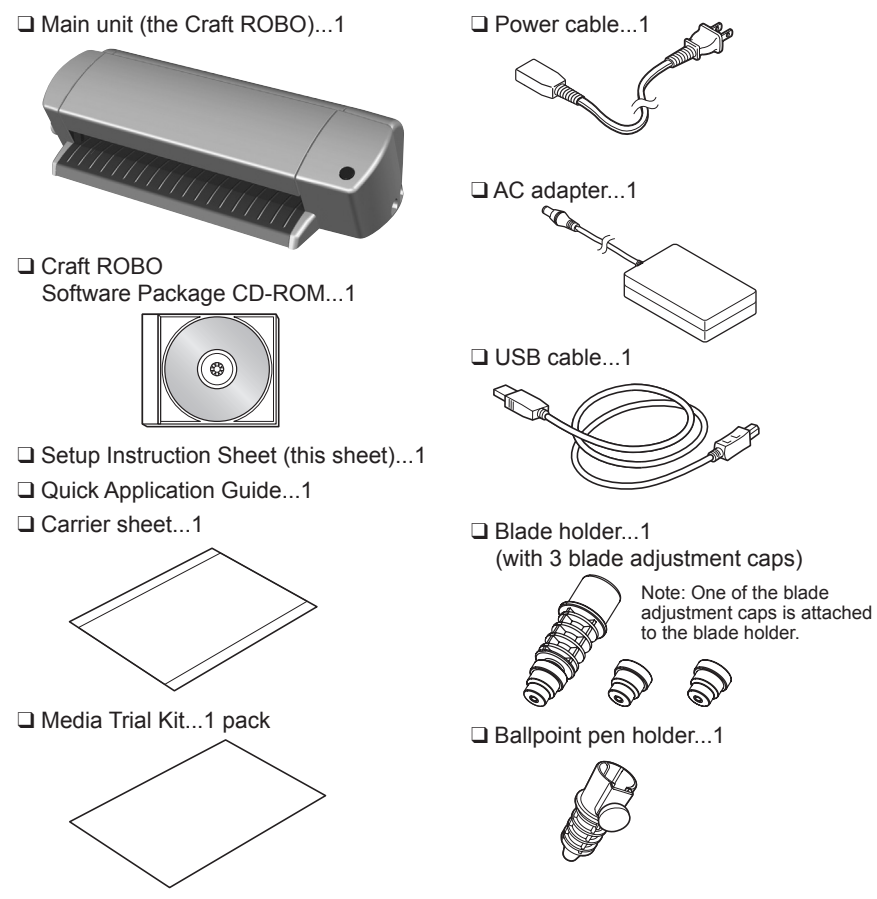
Setup Instruction Sheet for the Craft ROBO (CC200-20)

Thank you for purchasing the Graphtec Craft ROBO.

This setup instruction sheet outlines the procedure for setting up your machine. After setup, refer to the "Quick Application Guide" included with the Craft ROBO to learn how to operate it. Troubleshooting procedures are also provided in the "When You Have Problems..." section in the "Quick Application Guide". Please refer to this section if anything is unclear. The user's manuals for the Craft ROBO and the software are provided in PDF format on the CD-ROM supplied with the Craft ROBO. Please refer to these manuals for details on the Craft ROBO functions.

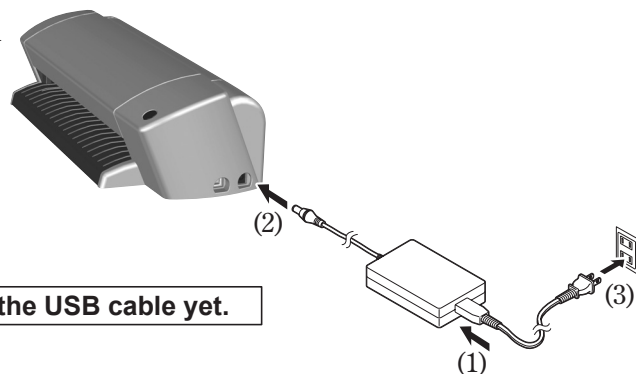
STEP 1 Check All the Included Items

The Craft ROBO comes with the items shown in the following list. While referring to this list, check that all the items have been included.



How to Connect the Power Cable

Referring to the diagram shown at the right, connect the power cable to your machine in the sequence (1) to (3).

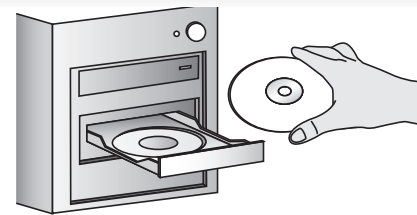


Note: Do not insert the USB cable yet.

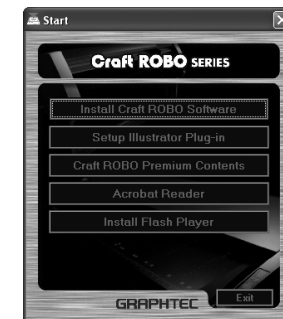
STEP 2 Install the Software

First of all

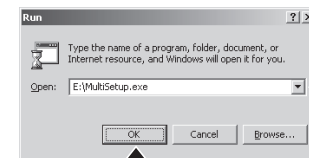
- (1) Check that the Craft ROBO is not connected to your computer. Start Windows, and then insert the "Craft ROBO Software Package CD-ROM" included with your Craft ROBO into the CD drive of your computer.



- (2) The Craft ROBO Start window is displayed after a short interval.

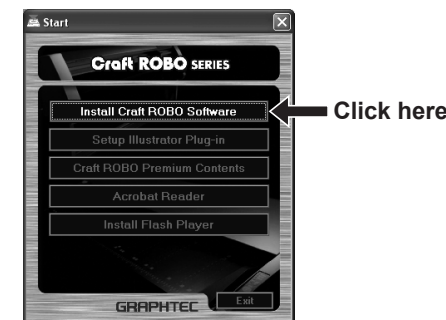


If it is not displayed, select "Run" from the Windows [Start] menu. Click "Browse", specify the "MultiSetup.exe" program on the CD-ROM, and then click the [OK] button.



Click here MultiSetup.exe

- (3) Click "Setup Craft ROBO" in the Craft ROBO [Start] window to launch the installer. All the required software will be successively installed by "Setup Craft ROBO". Follow the displayed screens to complete the installation.

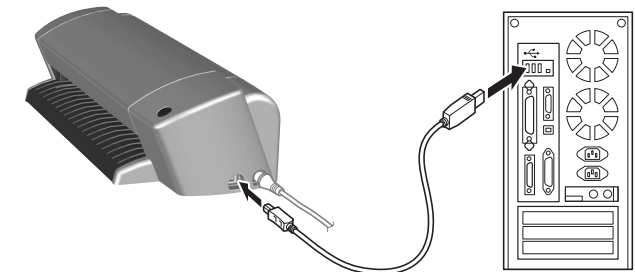
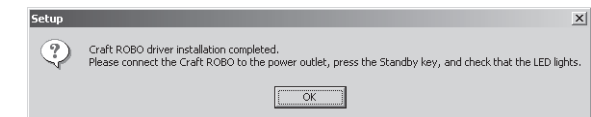


Note: If the Craft ROBO Controller has already been installed, select "Control Panel" → "Add or Remove Programs" and then uninstall the program before performing the setup operation.

STEP 3 Connect the Craft ROBO to a PC

If you are using the Craft ROBO for the first time

- (4) If the following message is displayed, use the USB cable to connect the Craft ROBO to your computer.



A wizard and the Help menu will be displayed. Follow the instructions to complete the setup.

If you are performing installation for the second or a subsequent time

When the software installation has been completed, it may be necessary to reboot Windows. In this case, follow the instructions for rebooting. After rebooting, and when the USB cable is used to connect the Craft ROBO to your computer, Windows will automatically recognize the Craft ROBO. If the "Search for New Hardware" wizard is displayed, select "Install the software automatically (Recommended)".

The preparations are now complete

- (5) This completes the installation of the software. You can now start using your Craft ROBO. Close the Craft ROBO [Start] window

The ROBO Master software is installed when you set up the Craft ROBO. This software will help you to create stickers, cut text on vinyl film, or create pop-up greeting cards. Use this software as an introduction to cutting stickers and signs, or making paper crafts.

Setup of the Craft ROBO main unit is now complete. Use the Media Trial Kit to learn the basic Craft ROBO operations.

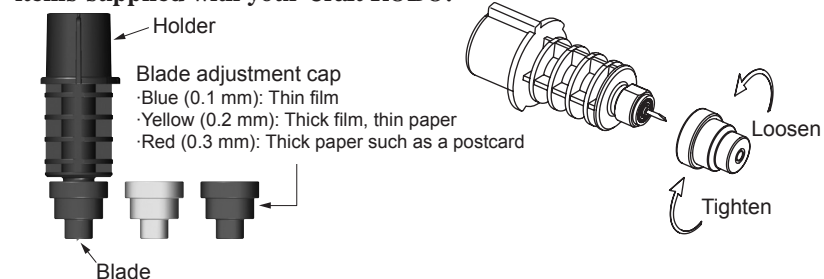
Craft ROBO Operation Manual

1 The basic Craft ROBO operations are described below.

Cutting

Mounting the Blade Holder

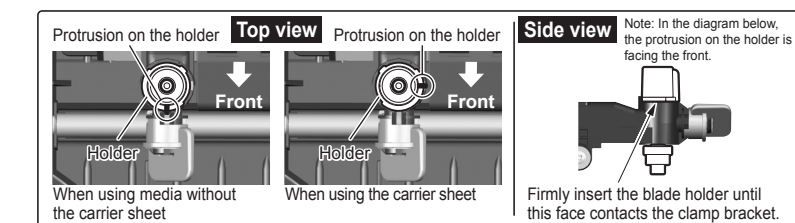
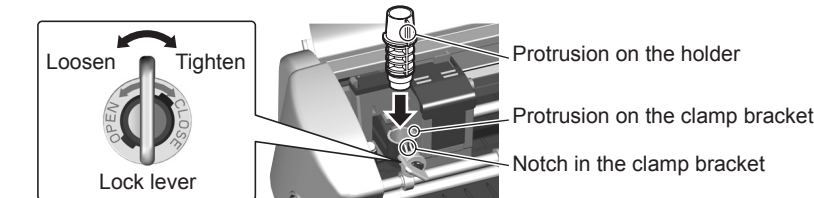
Confirm that you have the following items supplied with your Craft ROBO. Attach a blade adjustment cap.



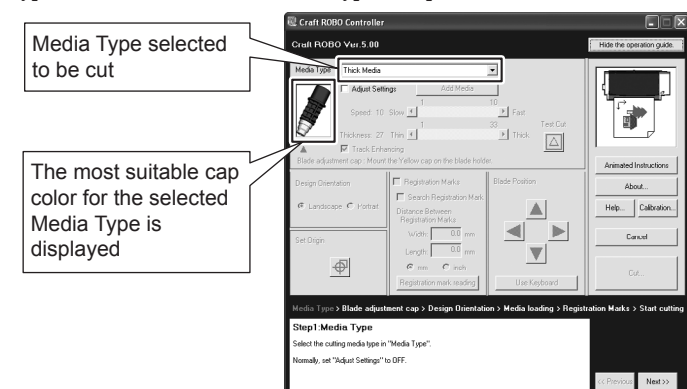
Mount the blade holder in the Craft ROBO.

If you are using media that does not require the carrier sheet, mount the blade holder while making sure that the protrusion on the holder faces the front and that it is aligned with the notch in the clamp bracket.

If you are using the carrier sheet, turn the protrusion on the holder 90 degrees to the right so that it fits against the protrusion on the clamp bracket.



The most suitable blade adjustment cap is automatically displayed when the media type is selected from the "Media Type" drop-down box in the Craft ROBO Controller.

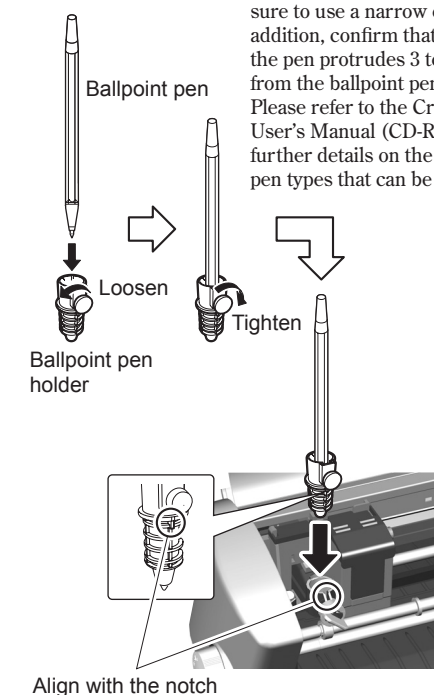


Test Plotting

Mounting

When using a ballpoint pen, select "Pen" for "Media Type" in the Craft ROBO Controller.

When using a ballpoint pen, be sure to use a narrow one. In addition, confirm that the tip of the pen protrudes 3 to 3.5 mm from the ballpoint pen holder. Please refer to the Craft ROBO User's Manual (CD-ROM) for further details on the ballpoint pen types that can be used.



2 Load a Sheet for Cutting or Test Plotting.

Load a sheet in the Craft ROBO

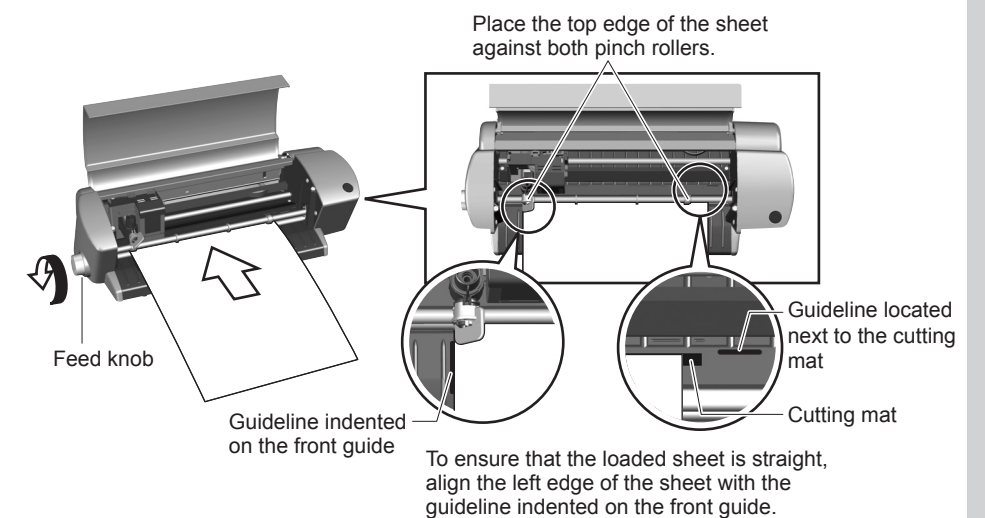
Note before using

Do not load media without a protective liner, or perform a cutting operation when there is no media loaded, as this will damage the cutting mat.

- Press the standby switch to turn on the power, and confirm that the lamp on the standby switch is lit (blue).



- Align the left edge of the sheet with the vertical guideline indented on the front guide. Place the top edge of the sheet against both pinch rollers, making sure that the sheet is straight.
- Turn the feed knob in the direction toward the rear of the Craft ROBO to feed the sheet until its top edge is aligned with the rear edge of the cutting mat, or with the indented guideline located next to the cutting mat.

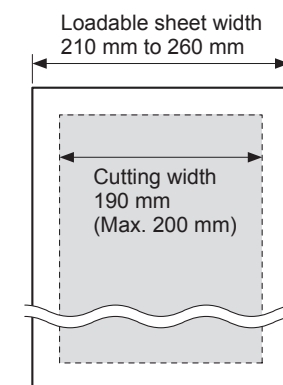


Setup is Complete

Note: Turn the feed knob to remove the sheet.

When cutting has been completed, press the standby switch and confirm that the lamp on the standby switch goes out.

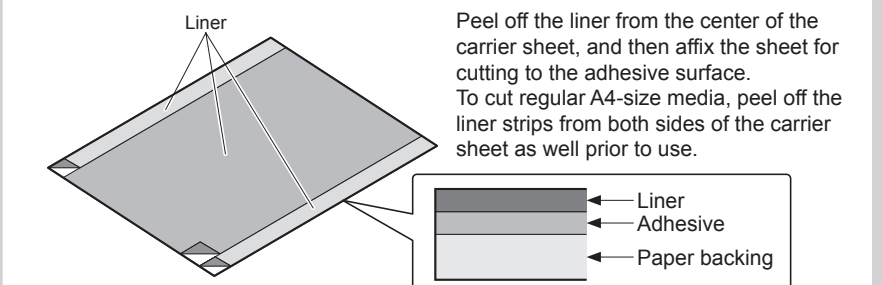
Media Sizes



When loading an A4-size sheet, align it with the guideline indented on the Craft ROBO's front guide.

Carrier Sheet

To cut a sheet smaller than A4 size or a sheet without a protective liner, affix it to the carrier sheet included with the Craft ROBO before performing cutting.



Caution

- Be particularly careful with the cutter blade when changing the blade adjustment cap or mounting the blade holder in the Craft ROBO.
- Graphtec does not guarantee the cutting quality when non-genuine Craft ROBO media is used. Using non-standard media may void the warranty.

Use the Media Trial Kit to learn how to operate the Craft ROBO.